

COMPANY PROFILE

2025 / 3rd QUARTER



CONVERTING ENERGY TO SYNERGY

TABLE OF CONTENT

Welcome to CSI	01-02
Company Vision & Value	03
Our Certificates & Memberships	04-05
Why Choose Us	06
Message From Board	07
CSI Global Services	08-11
Our Selected Projects	12-37
Some of Our Clients	38-39
Thronis & Videntium	40-41

WELCOME TO CSI



At CSI Global, we are at the forefront of MEP Testing & Commissioning and Engineering services, where precision, innovation, and dedication converge to set new industry benchmarks. Our reputation as a leader in engineering is built on a foundation of rigorous standards and exceptional outcomes.

Our team is our greatest asset comprising both seasoned experts and innovative young talent. Together, they drive our success by developing tailored solutions that not only meet but exceed conventional expectations. Their extensive knowledge and creative approach allow us to innovate continuously and develop proprietary technologies that push the boundaries of what is possible in engineering.

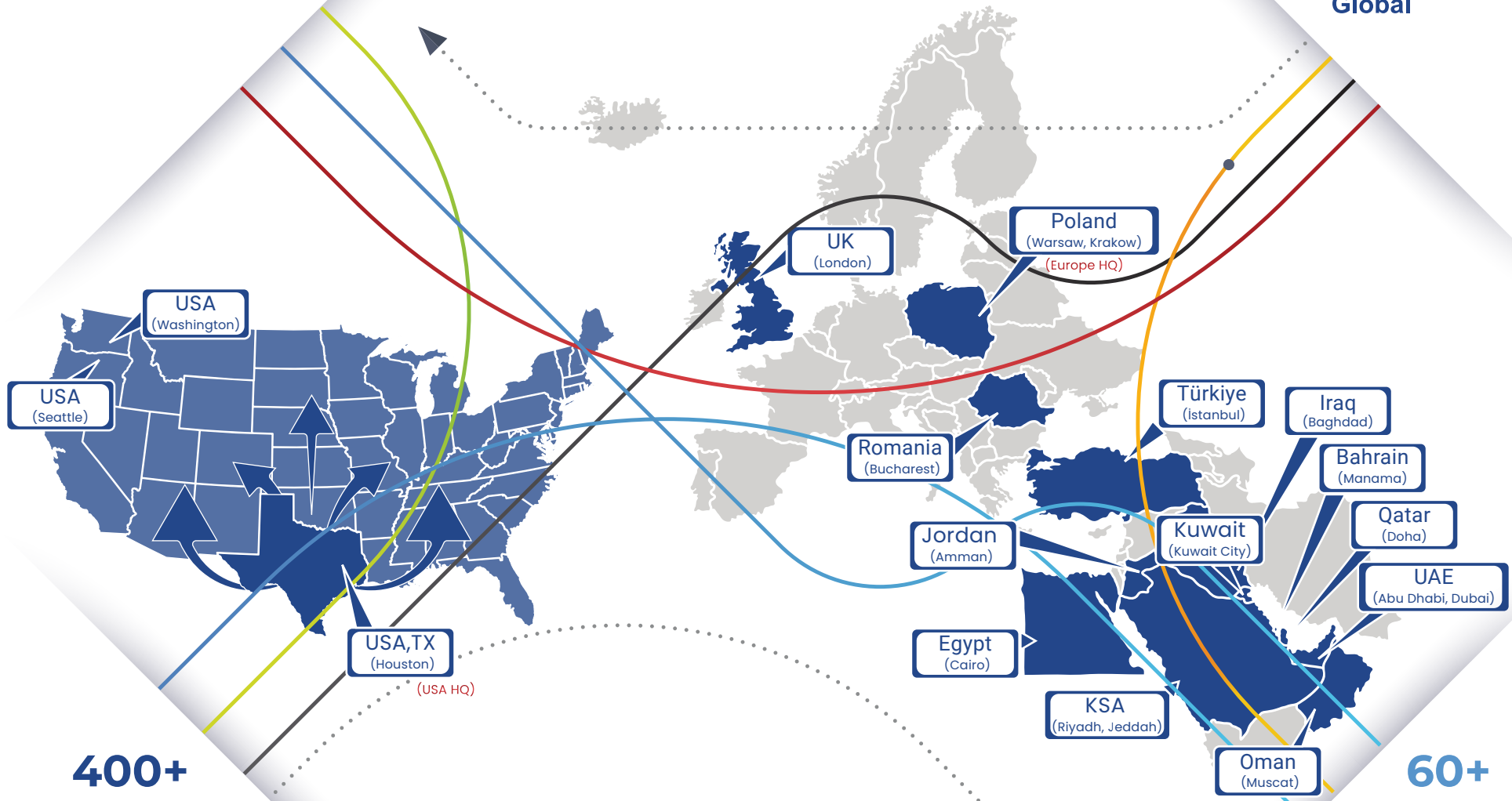
Client satisfaction is the cornerstone of our operations. We dedicate significant resources to fully understand our clients' specific needs, enabling us to provide customized, effective solutions that truly reflect their objectives. This client-first philosophy ensures we maintain our status as a trusted and reliable partner in all our engagements.

Our commitment to excellence is validated by numerous industry certifications and affiliations, which reflect our adherence to the highest standards of quality and sustainability. These accolades are not just badges of honor but symbols of our ongoing commitment to leading the industry forward.

Experience the CSI Global difference. Join us as we continue to redefine engineering excellence, expanding the scope and scale of your projects. Discover a world where engineering meets innovation and every challenge is an opportunity.

Welcome To CSI

CSI OFFICES



400+
Project
Experience

15+
Office
Location

20+
Nations

Aviation | Transportation | Commerical | Hotel & Resort | Medical Facilities | Infrastructure
Data Center | Educational | Residential | Industrial | Museum | Military

60+
Project
Managers

250+
Senior & Field
Engineers

600+
Qualified
Technicians

"CSI: Engineering excellence with a focus on innovation, customer satisfaction, and quality assurance."

COMPANY VISION & VALUE

*Experience Exceptional MEP Engineering Services with
CSI: Your Reliable Partner for Success*

OUR VISION

At CSI, we aspire to lead the way in Testing & Commissioning by continually enhancing our processes through ongoing training and upskilling of our staff, investing in and utilizing disruptive technology, and promoting social responsibility awareness throughout our industry. We strive to be a company that not only provides high-quality services but also makes a positive impact on our society and the environment. Our vision is to become a benchmark in our industry, setting new

OUR VALUE

At CSI, we prioritize our values of Independence, Innovation, and Integration in everything we do. We provide specialized MEP Testing & Commissioning services with complete independence and impartiality, delivering reliable reports that reflect the real status of project works progress. We believe in enhancing the industry through innovation, investing in disruptive technology and game-changing ideas, and constantly exploring new and innovative solutions. We also recognize the importance of teamwork and cooperation to ensure successful project completion, working collaboratively with stakeholders and maintaining proactive communication to achieve project milestones and successful handover.

"At CSI, our values drive everything we do, delivering exceptional service and building long-term relationships with our clients through excellence, innovation, integrity, and partnerships."



OUR CERTIFICATES & MEMBERSHIPS

At CSI, we recognize the value of certifications for both our organization and our engineers. As a result, we have many international certifications and an internal certification program for our engineers.



NEBB provides certification and training for professionals in building systems commissioning, testing, adjusting, and balancing. NEBB-certified CSI professionals have the necessary knowledge and skills to properly commission, test, and balance building systems to the highest standards. The certification requires ongoing education and ensures that professionals stay up-to-date with the latest industry standards. Holding NEBB certification sets CSI professionals apart in the industry and provides added value and confidence to clients.



Several CSI specialists hold LEED Green Associate certification, which is a fundamental accreditation in sustainable design and construction. This accreditation allows our team to deliver sustainable solutions and services on all projects, proving our dedication to energy efficiency and sustainability. Our LEED accreditation distinguishes us in the market and gives our clients significant value and assurance that we will produce great outcomes in our projects.



CSI values ISO certification as it demonstrates our commitment to quality, environmental responsibility, and occupational health and safety management. Obtaining ISO certification means we have efficient operations that meet international standards, reducing risks and environmental impacts while achieving excellent outcomes. ISO accreditation requires continuous improvement, ensuring operational and service excellence.



CSI professionals with CSA certification have demonstrated their competency and expertise in commissioning services. CSA certification is an industry-recognized standard for excellence in commissioning, ensuring that professionals possess the necessary knowledge and skills to ensure the successful commissioning of building systems. Holding CSA certification sets CSI professionals apart in the industry and provides added value and confidence to clients. CSA certification requires ongoing education and training, ensuring that professionals stay up-to-date with the latest industry standards and best practices.



CSI has Certified Energy Managers (CEM) and Certified Measurement and Verification Professionals (CMVP) to meet the AEE requirements for energy efficiency and sustainability in our projects. This certification sets us apart in the industry and shows our commitment to exceptional results for our clients.



CSI is an ACG member, and our employees hold ACG Commissioning Authority (CxA) certifications, demonstrating our expertise in independent commissioning services. ACG accreditation reinforces our commitment to quality assurance and ensures that our projects meet the highest industry standards. By adhering to ACG's rigorous guidelines, CSI enhances project performance, optimizes building systems, and delivers added value and trust to our clients.



CSI is an ASHRAE member, and our employees hold ASHRAE Building Commissioning Professional credentials, confirming our dedication to building commissioning and energy efficiency. ASHRAE accreditation distinguishes us in the market and assures that we adhere to the most recent industry standards and best practices. CSI's ASHRAE membership and accreditation adds value and trust to our clients while delivering great results in our projects.



As a member of the BSRIA association since 2017, CSI applies the codes and guidelines of BSRIA on its projects to ensure the highest standards are met. BSRIA is an industry-leading organization that provides guidance and support for building services engineering, and its codes and guidelines are widely recognized and respected in the industry. By adhering to BSRIA's standards, CSI ensures that its projects are of the highest quality and meet the expectations of its clients.



CSI's comprehensive training program for engineers and technicians, together with audits and quality control methods, enables us to maintain a high level of quality for our clients and assure consistency in all of our projects, regardless of location. Our on-site training and internal certification program, as well as our e-learning platform, ensure that our staff has the information and skills needed to achieve great outcomes. Our training program sets us apart in the business by assuring customers of our proficiency and knowledge, providing them with extra value and trust in our services.



NETA certification is a prestigious recognition within the electrical testing industry, particularly in the United States. Awarded by the InterNational Electrical Testing Association (NETA), this certification signifies CSI's dedication to upholding and surpassing the rigorous industry standards set forth by the ANSI/NETA ETT Standard for Certification of Electrical Testing Technicians.

As a NETA-certified company, CSI demonstrates its unwavering commitment to delivering top-tier electrical testing and maintenance services, whether within the United States or on projects overseas. This certification solidifies our standing as a trusted and proficient partner in the field of electrical testing and maintenance, further distinguishing us in the industry.



CSI has obtained the prestigious AQAP 2110:2016 certification. AQAP, which stands for Allied Quality Assurance Publications, is a set of quality management standards specifically designed for defense contractors and suppliers. The certification ensures that CSI adheres to stringent quality management practices, meeting the requirements and expectations of defense-related projects. By obtaining the AQAP 2110:2016 certification, CSI demonstrates its commitment to delivering high-quality services and products in the defense industry, further enhancing its reputation as a trusted and reliable partner.




CSI is approved by the Saudi Electricity Company (SEC), ensuring that our projects comply with the highest electrical and safety standards. SEC approval signifies our adherence to industry best practices, regulatory requirements, and technical excellence. By meeting SEC's stringent criteria, CSI guarantees reliable, efficient, and high-quality electrical installations, reinforcing trust and confidence among our clients.



CSI offers comprehensive **consultancy services** for both **BREEAM** (Building Research Establishment Environmental Assessment Method) and **LEED** (Leadership in Energy and Environmental Design) certifications. With their expertise in sustainable building practices, CSI assists clients in navigating the intricacies of both systems. They provide guidance on meeting the specific requirements of BREEAM and LEED, helping clients develop strategies for energy efficiency, water conservation, indoor environmental quality, materials selection, and more. By offering consultancy for both BREEAM and LEED, CSI empowers clients to achieve their sustainability goals and contribute to a greener and more environmentally friendly built environment.

WHY CHOOSE US?

CSI is committed to delivering exceptional MEP engineering services to help our clients achieve their goals.

-  **Expertise:** Our team of professionals has considerable industry expertise, ensuring that we deliver top-quality services to our clients.
-  **Innovation:** We embrace innovation and new ideas to enhance our services and provide the best solutions to our clients with disruptive technologies.
-  **Reliability:** We prioritize reliability, and our clients can trust us to deliver on our promises and meet their needs.
-  **Customer satisfaction:** Our focus on customer satisfaction ensures that we comprehend our clients' specific requirements and deliver individualized solutions that generate value and long-term success.
-  **Long-term partnerships:** We value partnerships and believe in building long-term relationships with our clients, partners, and communities to achieve shared goals and success.
-  **Quality services:** We are committed to providing high-quality services while maintaining essential certifications, making us a reliable partner for all of your engineering requirements.

We understand that choosing the right Testing & Commissioning services provider can be challenging. At CSI, we are dedicated to earning your trust and confidence by consistently delivering exceptional results and being a valued partner in your success. Contact us today to learn more about our services and how we can help you achieve your goals.



MESSAGE FROM BOARD

A Message from the Board: Innovating the Testing Commissioning industry with disruptive technologies and future-forward solutions.

Board's Message

CSI GLOBAL

As a forward-thinking company, CSI is dedicated to revolutionizing the Testing & Commissioning industry by leveraging innovative technologies and state-of-the-art solutions. We believe in constantly improving our processes and services to ensure that we remain at the forefront of our industry. Our vision is to be the go-to partner for clients who require cutting-edge MEP engineering services, and we achieve this through continuous investment in technology, training, and upskilling of our staff. At CSI, we are committed to excellence, collaboration, and pushing the boundaries of what is possible in the MEP engineering space.

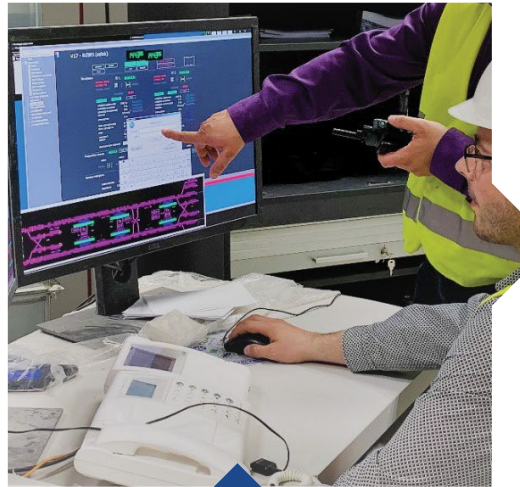


CSI Global Services



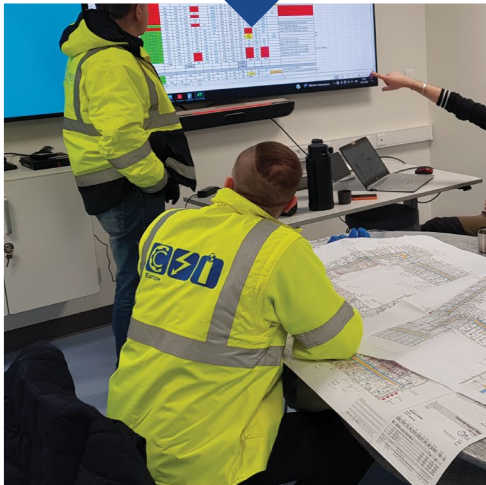
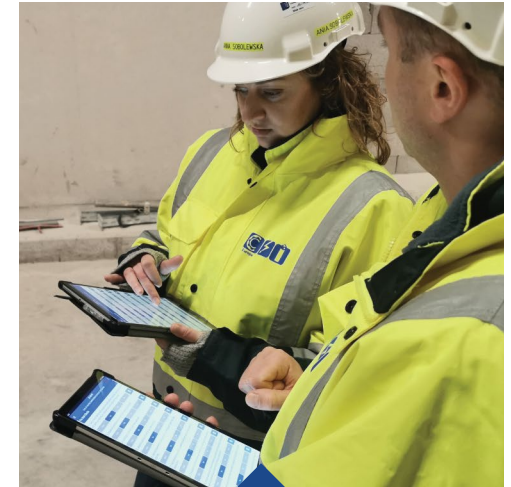
Tender Stage

- Tender Stage Engineering
- Value Engineering



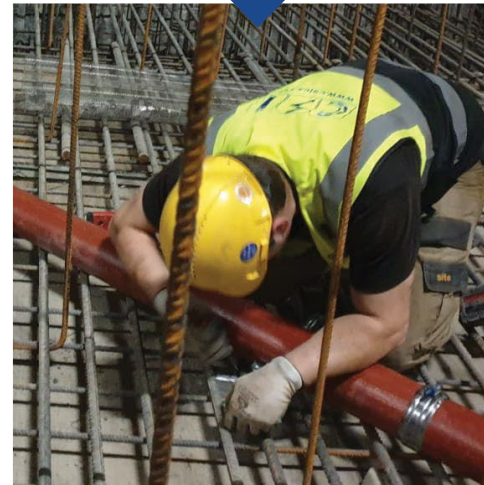
Construction Stage

- Prepare Commissioning Documentation
- Execute Pre-Commissioning Procedures
- Perform MEP Electrical System Testing
- Electrical and Mechanical Troubleshooting



Design Stage

- Conduct Commissionability Assessment
- Evaluate Basis of Design (BOD) and Owner's Project Requirements (OPR)
- Develop Commissioning Plan
- Draft Commissioning Specifications
- LEED Commissioning Requirements



Testing & Commissioning Stage

- Manage Commissioning Activities
- Initiate MEP System Start-Ups
- Conduct MEP Systems Functional Testing
- Ensure MEP System Integration and Performance Verification

CSI Global Services



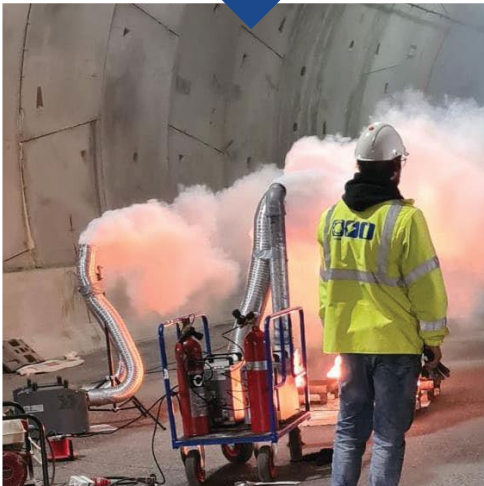
Handover Stage

- Implement Retro-Commissioning Initiatives
- Monitor System Performance Continuously
- Conduct Periodic Performance Evaluations
- Optimize System Operations



Energy & Sustainability

Energy Audit
LEED Consultancy
CSI Energy Solution & Review



Operation Stage

- Preparation of Operation & Maintenance (O&M) Manuals
- Develop MEP Training Manuals
- Organize and Conduct MEP Training Sessions
- Retro Commissioning



Visit
CSICX.com
For More

CSI Global SERVICES

Commissioning & Documentation



Commissioning Management

CSI's Commissioning Management ensures systems and equipment meet design specs and operational requirements. Our experts oversee the process from pre-design to post-construction providing tailored, high-quality services that guarantee project's success.



LEED Commissioning Agent

CSI provides expert LEED Commissioning Agent services for sustainable buildings. Our team of experienced professionals ensures that your project meets the highest standards of sustainability and efficiency.



Retro Commissioning

CSI offers expert Retro Commissioning services to improve the energy efficiency and performance of existing buildings. Our experienced professionals ensure that your building operates at peak performance, saving you money and reducing your environmental impact.



CX Verification & Validation

CSI provides Commissioning Verification & Validation services to ensure that building systems are functioning as intended. Our experienced professionals use advanced testing and analysis techniques to verify system performance and optimize efficiency.



Close Out Documentation

CSI provides comprehensive Closeout Documentation services to ensure that building systems are thoroughly documented, including operation manuals, as-built drawings, and maintenance schedules. Our experienced professionals use advanced tools and techniques to deliver high-quality documentation that meets industry standards.



Testing, Adjusting & Balancing

CSI provides expert Testing, Adjusting, and Balancing (TAB) services to ensure that HVAC systems operate at optimal performance and efficiency. Our TAB professionals use advanced tools and techniques to identify and correct issues, ensuring that systems meet all industry standards and regulations.

Testing & Diagnosis



Sound & Vibration Test

CSI provides Sound & Vibration Testing services to ensure that building systems meet acoustic performance standards. Our experienced professionals use advanced testing and analysis techniques to identify and address issues related to noise and vibration.



Electrical Testing

CSI offers expert Electrical Testing services to ensure that electrical systems operate at optimal performance and safety. Our Electrical Testing professionals use advanced tools and techniques to identify and correct issues, ensuring that systems meet all industry standards and regulations.



Thermal Imaging Test

CSI's Thermal Imaging Test uses advanced technology to identify and diagnose issues in buildings and facilities. Our Thermal Imaging experts use high-tech equipment to detect temperature variations and locate areas of concern, providing valuable insights to address potential issues.



Indoor Air Quality

CSI's Indoor Air Quality (IAQ) testing ensures that the air in your building or facility is safe and healthy for occupants. Our IAQ experts use advanced technology to detect potential air quality issues and provide customized solutions to address them.



Building Envelope Test

Building Envelope Test is a comprehensive evaluation of a building's exterior to ensure it is structurally sound, energy-efficient, and free from leaks.



Duct Leakage Test

CSI provides duct leakage test to ensure the duct is designed to measure amount of air leakage from the duct system of a building. This test helps to identify and quantify the amount of air loss, which can significantly impact the energy efficiency and indoor air quality of a building.



Tunnel Ventilation Test

CSI Provides Tunnel Ventilation Test service to ensure that your tunnel ventilation system is operating as intended, providing safe and efficient air flow to drivers and passengers. Our team of experts uses state-of-the-art equipment to thoroughly evaluate your system's performance and provide recommendations for any necessary adjustments or improvements.



Cold Smoke Test

CSI provides Commissioning Verification & Validation services to ensure that building systems are functioning as intended. Our experienced professionals use advanced testing and analysis techniques to verify system performance and optimize efficiency.



Energy Audit

Our Energy Audit service provides a comprehensive assessment of your building's energy usage to identify areas where energy efficiency improvements can be made.



CSI Energy Solution

CSI Energy Solutions is a company that provides energy-saving solutions to commercial and industrial buildings. They specialize in energy audits, retro-commissioning, and building automation systems.



CSI Energy Review

CSI Energy Review is a comprehensive energy assessment service offered by CSI Engineering. It helps businesses identify and prioritize energy-saving opportunities to reduce costs, lower carbon footprint, and improve sustainability.

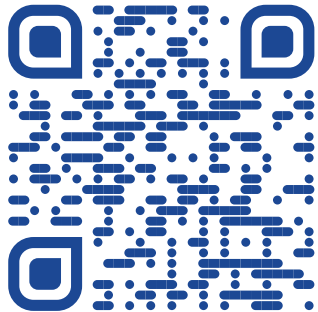


LEED Consultancy

We provide LEED (Leadership in Energy and Environmental Design) consultancy services to help clients achieve green building certification and reduce their environmental impact.

More About Our Services

CSI offers tailored MEP engineering services, including Testing & Commissioning, TAB, and documentation. Our team of experienced experts prioritizes innovation and excellence, delivering high-quality solutions that exceed expectations. With a focus on customer satisfaction and reliability, we're dedicated to ensuring your success. Please read the QR code given on side to reach more detailed version of our services.



OUR SELECTED PROJECTS

Abu Dhabi International Airport Terminal A (Midfield Terminal)

Location: Abu Dhabi/ United Arab Emirates
Owner/Developer: Abu Dhabi Airports Company (ADAC)



Consultant/PM: AECOM

Main Contractor: 2012-2021 TCA-JV (TAV, CCC, Arabtec JV)
2021-2023 Trojan Construction

Scope of Work:

- MEP Systems Commissioning Management
- IT Systems Commissioning Management
- Cause & Effect Management
- Construction Snagging Tracking, Coordination Support & Facility Management
- Testing, Adjusting & Balancing Works

11,000 passengers every hour

As one of the largest airport terminals in the world, the facility covers nearly 8 million square feet and will accommodate up to 45 million passengers per year, processing 11,000 travelers per hour and handling 79 aircraft at any given time.

The terminal is also equipped with industry-changing technology, allowing passengers to pass through seamlessly. A range of interconnected biometric systems installed are expected to provide a digitized journey from pre-travel to boarding thanks to self-service kiosks, streamlined security checkpoints, and reportedly the world's largest baggage handling system.

King Abdullah Financial District

Location: Riyadh, Kingdom of Saudi Arabia
Owner/Developer: Public Investment Fund of Saudi Arabia



CP03 Package: Parcels 4.02, 4.07 & 4.08

Consultant/PM: Parsons and Dar Al Handasa

Main Contractor: UNEC, United Engineering Construction Company

Scope of Work: MEP Systems Commissioning Management, HVAC Systems TAB Works and COD

CP04 Package: Parcels 2.05, 2.08, 2.09, 2.10, 2.11, 2.12

Consultant/PM: Saudi Arabian Baytur Company

Main Contractor: SAB, Saudi Arabian Baytur Company

Scope of Work: MEP Systems Commissioning Management and COD

J01 Package: Parcels 4.04, 5.03, 5.04, 5.05 & 5.06

Consultant/PM: Jones Lang LaSalle Incorporated JLL and Dar

Main Contractor: SAB, Saudi Arabian Baytur Company

Scope of Work: MEP Systems Commissioning Management, HVAC Systems TAB Works and COD

J03 Package: Parcels 1.09, 1.10, 1.11, 1.14 & 1.15

Consultant/PM: Jones Lang LaSalle Incorporated JLL

Main Contractor: Shapoorji Pallonji Company

Scope of Work: HVAC Systems TAB Works

Parcels 2.13, Saudi ARAMCO Tower

Consultant/PM: Dar International

Main Contractor: SAB, Saudi Arabian Baytur Company

Scope of Work: MEP Systems Commissioning Management

J02 Package: Parcels 3.09, 3.10, 5.01, & 5.02

Consultant/PM: Jones Lang LaSalle Incorporated JLL and Dar

Main Contractor: Mohammed M. Al Rashid Co. (MARCO), Al Rashid Trading & Contracting

Scope of Work: MEP Systems Commissioning Management, HVAC Systems TAB Works and COD

Six Senses Wadi Safar Hotel Diriyah

Location: Riyadh, KSA
Owner/Developer: Diriyah Gate Development Authority



Consultant/PM: InterContinental Hotels Group PLC

Main Contractor: Hassan Allam Construction Saudi Jointly with Rawabi Specialized Contracting

Scope of Work: CSI is directly appointed as an Independent Commissioning Agent (known henceforth as the ICA) to monitor and report to the client, The Engineer and the Construction & Site Supervision Consultant upon the progress and quality of the Commissioning and Testing and to undertake the compilation of the Operating and Maintenance Manuals, Record Documentation.

The Scope for this Task Order will commence at the Construction Stage and will also include the Commissioning Stage, Project Completion and Post Handover.

The globally renowned hotel brand Six Senses has recently unveiled plans for a new hotel in the new prestigious Wadi Safar Project in Diriyah, Riyadh. The Six Senses Wadi Safar is poised to mesmerize visitors with its stunning broad views of the extraordinary valley, courtesy of its unparalleled hilltop location.

Spread across a vast 49 acres within the gated Wadi Safar community, called as the 'Bel Air' of Saudi Arabia, the hotel aims to deliver unparalleled guest experiences that combine the region's deep-rooted culture with modern creative luxury.

The resort aims to be more than just a five-star accommodation; it is envisioned as a dynamic cultural hub and wellness retreat. Plans are underway for regular events, weekend escapes, and extended vacations to cater to a diverse range of guests - from history buffs to wellness enthusiasts.

Obero Hotel & Branded Residences Wadi Safar Diriyah

Location: Riyadh, KSA
Owner/Developer: Diriyah Gate Development Authority



Consultant/PM: AECOM

Main Contractor: Albawani and Urbacon Trading & Contracting

Scope of Work: CSI is directly appointed as an Independent Commissioning Agent (known henceforth as the ICA) to monitor and report to the client, The Engineer and the Construction & Site Supervision Consultant upon the progress and quality of the Commissioning processes while undertaking the compliance of the operating Maintenance Manuals, Record Documentation, prepare training manuals and any other scope required.

CSI role is to review, inspection and advisory as per the necessary attendances, information, documentation and drawings.

Wadi Safar is a geographic area and a wadi system located to the west of Riyadh. The area forms a natural branch and tributary to Wadi Hanifah from the central portion of the Wadi.

The area is developed by the Diriyah Gate Company Limited (DGCL) to expand upon the Diriyah Gate development, immediately east of Wadi Safar.

The Oberoi Hotel and Branded Residence is located on the Northern plateau with high escarpment perimeter to the South and West of the plot which forms a major part of the layout and design of the hotel offering interesting panoramic views of the valley and its surrounds.

The Oberoi Hotel and Branded Residence adopts a Najdi architectural character, in line with the theme of the Wadi Safar development. The hotel will have 78 rooms and 34 fully serviced luxury residences and is expected to open in 2026.

Amansamar Hotel & Branded Residences Wadi Safar Diriyah

Location: Riyadh, KSA
Owner/Developer: Diriyah Gate Development Authority



Consultant/PM: Aman Group

Main Contractor: Albawani and Urbacon Trading & Contracting

Scope of Work: CSI is directly appointed as an Independent Commissioning Agent (known henceforth as the ICA) to monitor and report to the client, The Engineer and the Construction & Site Supervision Consultant upon the progress and quality of the Commissioning and Testing and to undertake the compilation of the Operating and Maintenance Manuals, Record Documentation.

The Scope for this Task Order will commence at the Construction Stage and will also include the Commissioning Stage, Project Completion and Post Handover.

Diriyah Company, in partnership with pioneering luxury lifestyle brand Aman Group, is pleased to announce two forthcoming destinations in the Kingdom of Saudi Arabia – Aman Wadi Safar and Janu Diriyah from Aman's sister brand Janu.

Located in the exceptional desert landscape near the city of Riyadh, Aman Wadi Safar will feature 78 keys, a collection of up to 34 fully-serviced Aman branded residences and expansive amenities including a vast Aman Spa and an array of dining experiences.

Aman Wadi Safar will draw inspiration from its rich cultural heritage, traditional Najdi architecture and uniquely beautiful natural environment. With a resort setting weaving through the wadis and plateaus of Wadi Safar, the connection between the property and Saudi's iconic landscape will be constantly reinforced.

SEVEN Abha (Aseer) Project

Location: Between Abha & Khamis Mushait, KSA
Owner/Developer: Saudi Entertainment Ventures (SEVEN)



Consultant/PM: Gensler

Main Contractor: Modern Building Leaders (MBL)

Scope of Work: Commissioning Management, TAB, Documentation preparation.

Description

Inspired by ancient stone architecture of Aseer, following regional urban code

Both projects are part of SEVEN's national rollout: **21 entertainment destinations** across 14 cities, with total investment exceeding **SAR 50 billion**

Alignment with **Vision 2030**, aiming to diversify entertainment infrastructure, create jobs, and boost regional GDP.

- Abha project expected to deliver SAR 4 billion to regional GDP and attract 5 million visitors by 2030

•

Investment Value: >SAR 1.3 billion (~USD 347 million)

Land & Built Area:

- Land: ~64,000 m²

SEVEN Yanbu Project

Location : Seafont promenade on Al Nawras Island, Yanbu, KSA
Owner: Saudi Entertainment Ventures (SEVEN)



Consultant/PM: Gensler

Main Contractor: JV of Al Bawani Co. Ltd. & UCC Saudi

Scope of Work: Commissioning Management, Review Documentation, Project Hand Over Documentation.

Description

Both Yanbu and Abha projects are flagship entertainment destinations under SEVEN's nationwide strategy, showcasing multimillion riyal investments, global collaborators (Gensler, Warner, Hasbro), and high-profile contractors—aligned with Saudi Arabia's Vision 2030.

Investment Value: ~SAR 1.1 billion (~USD 290 million)

Key Attractions:

- Carnival-themed family entertainment centre (rides, Clip 'n Climb)
- 10-screen cinema, 10-lane bowling, indoor adventure golf, plus retail & dining

Land & Built Area:

- Land: >36,000 m²
- Built-up: >62,000 m²

Misk Schools

Location: Riyadh
Owner/Developer: Misk City Company



Consultant/PM: JLL

Main Contractor: Baytur SA

Scope of Work: The role of CSI is (Independent Commissioning Authority, Testing and Commissioning all MEP systems in addition to providing a maintenance consultancy during the main Consultancy Services Agreement) and has the requisite knowledge, skills and experience is familiar with the site and the client 's requirement and has sufficient qualified personnel to provide the Subconsultant Scope of Work.

Campus Site: Situated in Prince Mohammed Bin Salman Nonprofit City (also called Misk City or MBS City) in Irqah, Riyadh. **Estimated Cost:** Around SAR 2 billion

Scale & Scope:

Land Area: ~21 hectares (~210,000 m² site)

Built-Up Space: ~110,000 m² across nine school buildings
TAB Works and COD

Educational Range: Co-ed PreK through Grade 12, with separate sections for boys and girls in primary/middle/senior levels

Facilities Include:

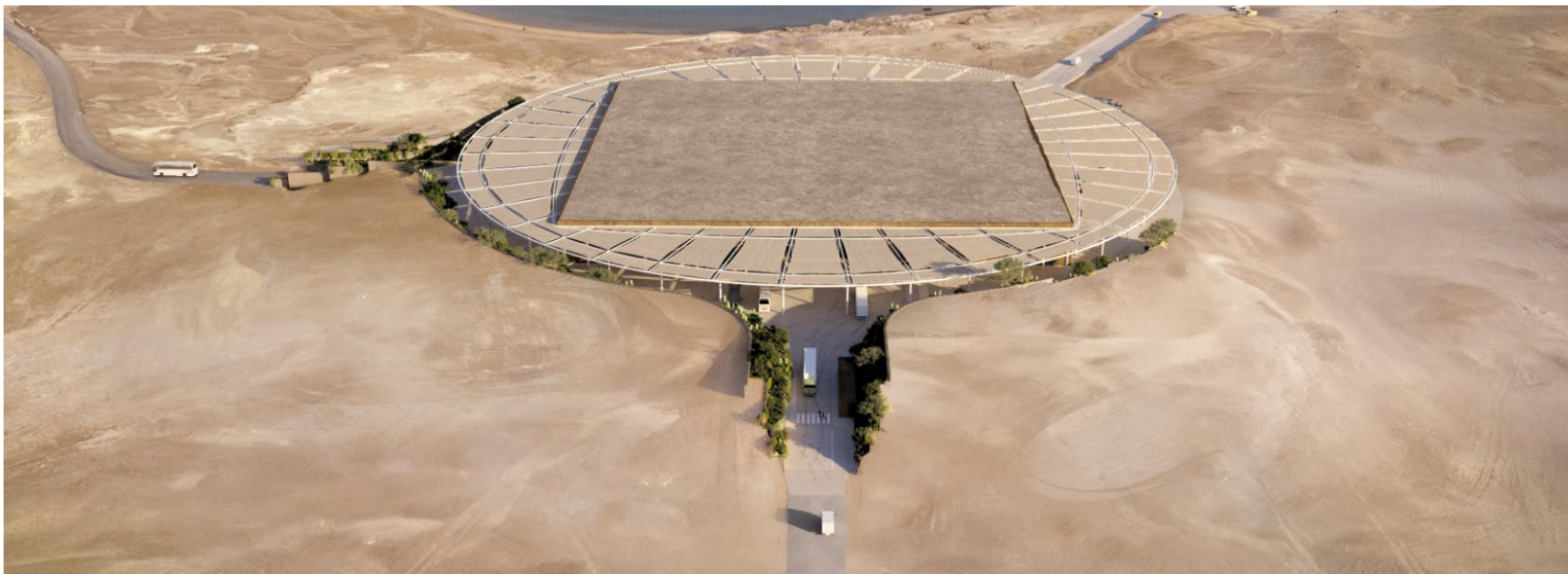
- Academic classrooms, libraries, science/food tech labs, art/design studios, Arabic culture hubs, IT suites, music rooms
- Kitchens supporting a "farm to table" initiative
- Specialized STEM workshops, filmmaking/digital editing suites, black-box theatres, Master Chef style kitchens
- Sport amenities: Olympic pools (25m & 50m), athletics track, sports halls, gymnastics hall, FIFA standard pitches, golf, e-sports, equestrian, go-karting academies
- The campus has attained LEED Gold Certification, along with WELL Gold Precertification, highlighting sustainable design choices like natural ventilation, low emitting materials, and smart energy/water services.

Key Milestones:

- Groundbreaking: Initiated ~2020–2021 (feasibility phase began 2019)
- Construction Start: Officially in dates ranging from February 2021 (Phase 1 site prep) up to full launch circa 2024.
- Opening: Targeted for the start of academic year September 2022 (1444 AH), now fully operational

KAUST Coral Nurseries

Location: Shushah Island & Haddah Beach, NEOM, KSA
Owner: King Abdullah University of Science and Technology, NEOM



Consultant/PM: Hassan Allam

Main Contractor: IDOM

Scope of Work: Design review, CFD Analysis & Commissioning management.

Description

Objectives & Strategic Impact

- Environmental: Revive 100ha reefscape, bolstering biodiversity in the Red Sea—home to 25% of known marine life
- Economic: Promote Saudi Arabia's blue economy and ecotourism under Vision 2030
- Research & Education: Establish a global marine science hub at Shushah Island, training Saudi researchers via immersive programs

Facilities & Scale

- **Ocean-Based Nurseries:** In-situ nursery structures at Shushah Island supporting up to 100,000 corals annually

Land-Based Nurseries:

- **Pilot Facility (2024):** ~1,000 m² to propagate ~40,000 corals per year .
- **Primary Facility (under construction):** ~16,000 m² (approx. five soccer fields), with 400+ tanks, targeting **400,000 corals annually**, and expected completion by end of 2025
- **Ultimate Aim:** Deploy over 2 million coral fragments across a 100 ha reefscape by 2030+

Technology & Innovation

- **eCoral™ Digital Twin:** KAUST-developed AI and ML platform for real-time reef monitoring, scenario modeling, and ecosystem health prediction
- **Advanced Propagation Techniques:** Using both asexual (microfragmentation) and sexual reproduction strategies to maximize resilience and diversity
- **Monitoring Tools:** Facilities will incorporate drones, AUVs, LiDAR, photogrammetry, and sensors for automated surveillance

Dr. Sulaiman Al Habib Hospital Al Muhammadiyah

Location: Jeddah, KSA
Owner/Developer: Dr. Sulaiman Al Habib Medical Services Group (HMG)



- **Consultant/PM:** Zamil Air Conditioning and Refrigeration Services Co. LLC
- **Main Contractor:** Zamil Air Conditioning and Refrigeration Services Co. LLC
- **Scope of Work:** CSI is required as Commissioning Management as well as the well crafted close out /Handing Over documents for MEP system.
-
- **Project Size:** Covers ~24,000 m², designed to house approximately 270 clinics and 350 inpatient beds .
-
- **MEP (Mechanical, Electrical, Plumbing):** Constructed under a SAR 758.7 million contract with Zamil Air Conditioning & Refrigeration, spanning 14.5 months.
-
- **Services Installed:** Water, electricity, and air-conditioning fully connected. Testing and commissioning of MEP systems, safety systems, medical/non-medical furnishings, and equipment began Q4 2024 into Q1 2025
-
- **Facility Composition**
- **Beds & Clinical Units**
- **350 beds total, inclusive of:**
- General medical/surgical wards

- 100+ ICU beds (intensive care)
- Emergency department with ~50 beds
- Operating rooms: multiple OTs including cardiac catheterization labs

Clinics & Diagnostic Units

- Up to 270 outpatient clinics, covering diverse specialties .
- Includes radiology (X ray, ultrasound), a comprehensive lab, and at least 2 cardiac cath labs .

Digital & Patient-Flow Systems

- Advanced digital signage & queue management deployed:
 - o Over 142 service counters equipped with kiosks and digital displays integrated into the central hospital system
 - o 500+ screens across multiple HMG facilities (waiting rooms, nurse stations) using Scala/Comm IT -- part of the fully digitized hospital environment
 - o Real-time BI dashboards for operational oversight and service optimization.



King Khalid International Airport

Location: Riyadh, Kingdom of Saudi Arabia
 Owner/Developer: General Authority of Civil Aviation (GACA)
 Consultant: AECOM
 Main Contractor: Al Rashid Trading & Contracting Company - IC Ictas Saudi Arabia Limited Joint Venture (RTCC-IC JV)
 Scope of Work: Commissioning Authority



Bahrain International Airport Modernization

Location: Manamah, Kingdom of Bahrain
 Owner/Developer: Bahrain International Airport
 Consultant/PM: Hill International
 Main Contractor: TAV Arabtec JV
 MEP Sub-Contractor: SONMEZ
 Scope of Work: Commissioning Verification / HVAC Systems TAB Works Supervision



AMMROC - Advance Military Maintenance, Repair and Overhaul Center

Location: Al Ain, United Arab Emirates
 Owner/Developer: AMMROC
 Consultant/PM: ECG & AECOM
 Main Contractor: MESCO - JV
 Scope of Work: MEP Systems Commissioning Management, COD, BIM



Hamad International Airport

Location: Doha, Qatar
 Owner/Developer: Qatar Civil Aviation Authority
 Consultant: Misa
 Scope of Work: Testing & Commissioning Management, ORAT for Airport expansion



MISK School Campus

Location: Riyadh, Kingdom of Saudi Arabia
 Client: MISK (Misk Foundation)
 Consultant/PM: WSP
 Main Contractor: SAB, Saudi Arabian Baytur Company
 Scope of Work: Commissioning Management, Testing, Adjusting & Balancing Works



Riyadh Metro Line 3 (22 Stations, 2 Depots)

Location: Riyadh, Kingdom of Saudi Arabia
 Client: Royal Commission for Riyadh City (RCRC)
 Main Contractor: "ANM" consortium - Webuild (leader - Italy), L&T (India), Nesma (KSA), Hitachi (Italy/Japan), and Alstom (UK)
 Scope of Work: Testing & Commissioning Management



Public Investment Fund (PIF) Tower

Location: Riyadh, Kingdom of Saudi Arabia
 Client: King Abdullah Financial District (KAJD)
 Consultant/PM: Parsons
 Main Contractor: Absal Paul Contracting
 Scope of Work: HVAC System Commissioning, and Testing, Adjusting & Balancing Works



Jubail University

Location: Riyadh, Kingdom of Saudi Arabia
 Client: Jubail Royal Commission
 Consultant: Bechtel
 Main Contractor: Rezayat Group
 Scope of Work: HVAC System Commissioning, and Testing, Adjusting & Balancing Works



Riyadh Metro Line 2 (6 Surface Stations)

Location: Riyadh, Kingdom of Saudi Arabia
 Owner/Developer: Arriyadh Development Authority (ADA)
 Consultant: Riyadh Metro Transit Consultants
 Main Contractor: BACS JV
 MEP Sub Contractor: HAPCO Co.
 Scope of Work: Testing Adjusting and Balancing Works



Marassi Al Bahrain Mall, Hotel and Residences

Location: Manama, Bahrain
 Client: Eagle Hills, Diyar
 Consultant: Parsons & Pace
 Main Contractor: Shapoorji Pallonji
 Scope of Work: HVAC System Commissioning, and Testing, Adjusting & Balancing Works



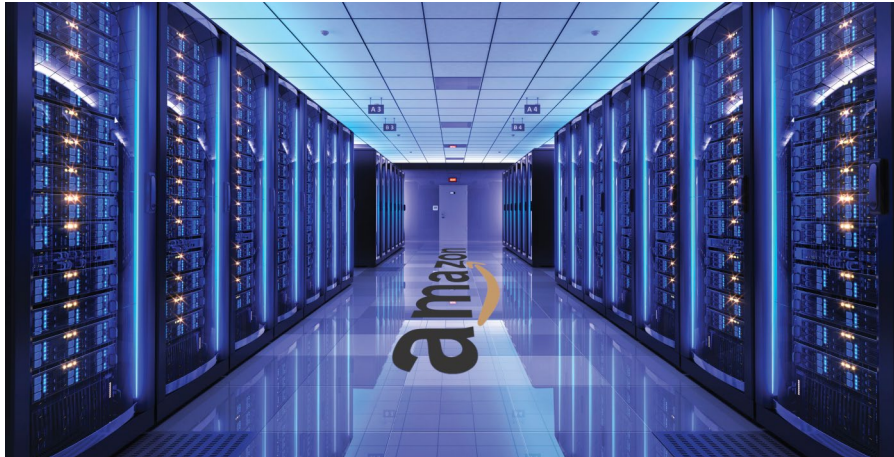
Al Thumama Stadium

Location: Al Thumama, Qatar
 Client: Supreme Committee for Delivery & Legacy
 Consultant/PM: AEB/Time Qatar
 Main Contractor: Al Jaber Engineering L.L.C & Tekfen Construction and Installation Co., Inc. J.V
 Scope of Work: MEP Systems Commissioning Management and Asset Register Preparation



Abu Dhabi Plaza

Location: Astana, Kazakhstan
 Abu Dhabi Government / ALDAR Properties PJSC
 Consultant/PM: AECOM
 Main Contractor: Arabtec Consolidated Contractors Company JV
 CSI Scope of Work: MEP Systems Commissioning Management / Electrical Testing / HVAC Systems TAB Works



Amazon Data Centre

Location: Zallaq, Bahrain
 Owner/Developer: Amazon
 Consultant: Red Consultant
 Contractor: Absal Paul Contracting
 Scope of Work: HVAC System Commissioning, and Testing, Adjusting & Balancing Works



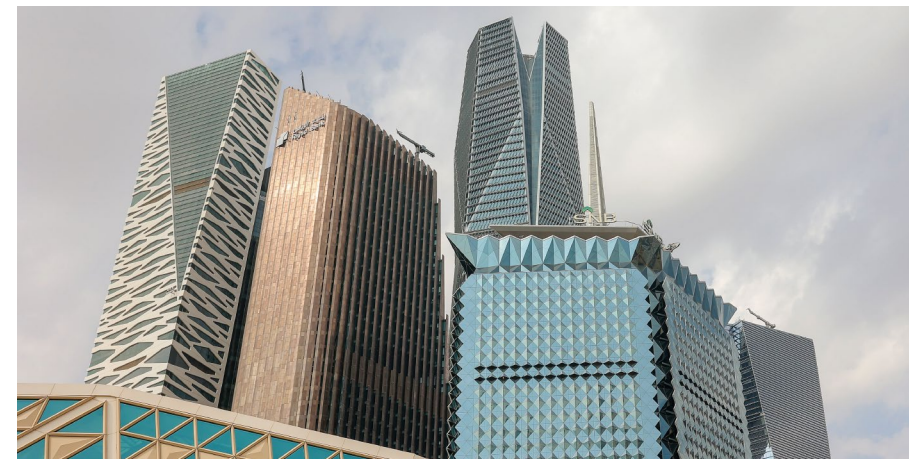
Relocate Control Rooms at Zulf GOSP

Location: Dammam, Kingdom of Saudi Arabia
 Owner/Developer: ARAMCO Overseas Company
 Consultant: McDermott Arabia Company Ltd.
 Main Contractor: Control Contracting & Trading Co.
 Scope of Work: HVAC System Commissioning, and Testing, Adjusting & Balancing Works



Quantum Switch Data Centre

Location: Dammam, Kingdom of Saudi Arabia
 Owner/Developer: Saudi ARAMCO
 Consultant: BSE3D
 Main Contractor: Jones Engineering Saudi Arabic Ltd.
 Scope of Work: HVAC Commissioning & TAB



SNB Bank

Location: Riyadh, Kingdom of Saudi Arabia
 Owner/Developer: SNB Bank
 Consultant: Buro Happold Consulting Engineers
 Main Contractor: Al-Mahmal Facility Management
 Scope of Work: HVAC Commissioning & TAB



Royal Saudi Land Forces

Location: Kingdom of Saudi Arabia
 Client: Royal Saudi Land Forces
 Consultant/PM: U.S. Army Corps of Engineers
 Main Contractor: Al Yamama Company for Trading & Contracting
 Scope of Work: HVAC System Commissioning, and Testing, Adjusting & Balancing Works



Digital City Multiple buildings

Location: Riyadh, Kingdom of Saudi Arabia
 Owner/Developer: GOSI
 Owner Representative: OSOOL
 Consultant/PM: JLL
 Scope of Work: Fire & Life Safety Consultancy



GOSI Station & Skywalk - Granada Mall

Location: Riyadh, Kingdom of Saudi Arabia
 Owner/Developer: GOSI
 Owner Representative: OSOOL
 Consultant/PM: JLL
 Scope of Work: Dilapidation and Condition Assessment



Labor Camp - P & C

Location: Jubail, Kingdom of Saudi Arabia
 Owner/Developer: Jubail Royal Commission
 Consultant: Bechtel
 Main Contractor: Al Falak
 Scope of Work: HVAC System Commissioning, and Testing, Adjusting & Balancing Works



Qurinyah Substation

Location: Jeddah, Kingdom of Saudi Arabia
 Owner/Developer: Saudi Electricity Company
 Main Contractor: The Saudi Emaar Limited Company for Energy
 Scope of Work: Electrical Testing and Commissioning Hands On Works
 110/13.8KV TEMPORARY SUBSTATION



Jabar Omar Development - Phase III

Location: Makkah, Kingdom of Saudi Arabia
 Owner/Developer: Jabal Omar Development
 PM: Hill International
 Consultant: Engineering Consultants Group
 Main Contractor: Arabian Construction Company – Drake and Scull (ACC-DSE JV)
 Scope of Work: MEP Systems Commissioning Management



Ajdan Waterfront Development

Location: Al Khobar, Kingdom of Saudi Arabia
 Owner/Developer: AJDAN / Al Oula Real Estate
 Consultant/PM: EHAF Consulting Engineers
 Main Contractor: MASA Company
 Scope of Work: Commissioning Authority



MU-01 Tower 2 Building

Location: Riyadh, Kingdom of Saudi Arabia
 Owner/Developer: Ministry of Energy Industry and Mineral Resources (MEIM)
 Contractor: Isam Kabbani & Partners
 Scope of Work: Commissioning Management



Al Faisaliah Tower

Location: Riyadh, KSA
 Client: Al Faisaliah Tower Group
 Consultants: Jones Lang LaSalle Incorporated (JLL)
 Contractor: C&P Contractor
 Scope of Work: TAB Works and Heat Load Analysis



AL Ain Hospital

Location: Al Ain, UAE
 Owner/Developer: SEHA / Abu Dhabi General Services Company (Musnada)
 Consultants: ICME / OBERMEYER
 Project Management: Allen & Shariff
 Main Contractor: Arabtec - San Jose JV
 Scope of Work: HVAC System Testing, Adjusting and Balancing Works



Reem Mall

Location: Abu Dhabi, UAE
 Owner/Developer: Al Farwaniya Property Developments LLC.
 Consultants: Dewan Architects & Engineers / WME
 Project Management: MACE International Limited
 Main Contractor: Itinera Ghantoot Joint Venture
 MEP Contractor: Drake & Scull
 Scope of Work: HVAC Testing, Adjusting and Balancing Works



Opera Grand Tower

Location: Dubai, UAE
 Owner/Developer: Emaar
 Consultant: Khatib & Alami
 Main Contractor: Consolidated Contractors Company (CCC)
 Sub-Contractor: Reliance Contracting Company (RCC)
 Scope of Work: MEP Testing & Commissioning Work/Testing, adjusting and balancing works/Hands on Electrical Testing



North Gate Mall And Office Buildings – Phase I

Location: Doha, Qatar
 Client: Bawabat Al Shamal
 Consultant/PM: Hill International
 Main Contractor: Habtoor Leighton Group (HLG)
 MEP Sub-Contractor: VOLTAS Limited Qatar
 Scope of Work: Commissioning Authority



Msherib Downtown Doha

Location: Doha, Qatar
 Owner/Developer: Msherib Properties
 Consultant/PM: Turner (TIME) Qatar
 Main Contractor: Brookfield Multiplex
 Scope of Work: COD



Katara Hospitality Tower

Location: Doha, Qatar
 Client: Katara Hospitality
 Main Contractor: HBK Contracting
 Scope of Work: Commissioning Management



US Navy Base in NSA1

Location: Juffair, Kingdom of Bahrain
 Owner/Developer: Naval Facilities Engineering Command
 Consultant: Naval Facilities Engineering Command
 Main Contractor: Kooheji Contractors
 MEP Contractor: International Agencies Co Ltd. (Intercol)
 Scope of Work: Testing and Commissioning Management



Emaar Square Mall and Development

Location: Çamlıca, Istanbul, Turkey
 Client: Emaar Properties Turkey
 Consultant/PM: Turner (TIME) Turkey
 Main Contractor: TAV SERA Construction JV
 MEP Sub-Contractor: SONMEZ METAL (Package III)
 Scope of Work: MEP Systems Commissioning Management / HVAC Systems, TAB Works Consultancy



Louvre Museum

Location: Abu Dhabi, United Arab Emirates
 Owner/Developer: Tourism Development & Investment
 Consultant: Buro Happold Consulting Engineers
 Main Contractor: ARABTEC
 Scope of Work: HVAC Commissioning & TAB Works



Dubai Eye

Location: Dubai, United Arab Emirates
 Owner/Developer: Meraas Holding
 Consultant/PM: WSP, Parsons
 Main Contractor: Hyundai Engineering & Construction
 Scope of Work: HVAC Commissioning & TAB Works



Jumeriah Gate

Location: Dubai, United Arab Emirates
 Owner/Developer: Al Ain Properties
 Consultant/PM: WSP
 Main Contractor: Multiplex Construction L.L.C
 Scope of Work: Commissioning & TAB Works



St. Regis Amman Hotel and Serviced Apartments

Location: Amman, Jordan
 Client: Eagle Hills
 Consultant/PM: Turner (TIME)
 Main Contractor: Arabtec Jordan
 MEP Sub-Contractor: Drake and Scull Jordan
 Scope of Work: HVAC Systems Testing, Adjusting and Balancing



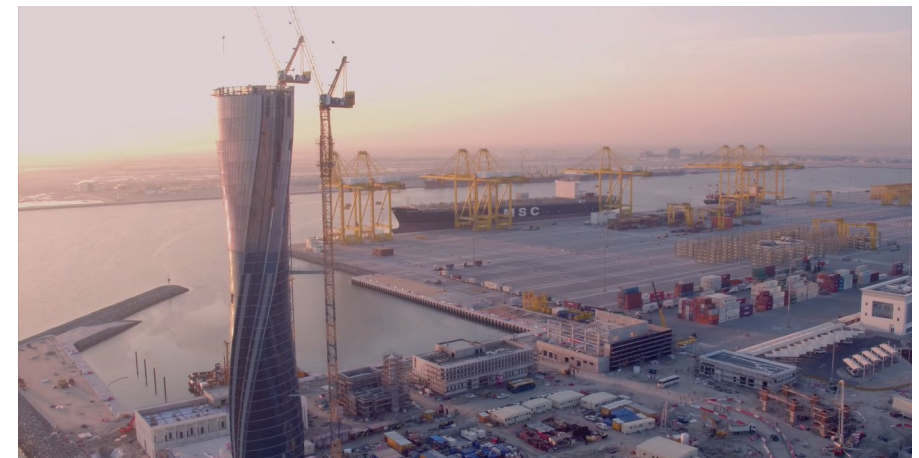
The New Parliament Building

Location: New Administrative Capital, Egypt
 Client: ACUD
 Consultant: Dar Al Handasah
 Main Contractor: The Arab Contractors
 Scope of Work: HVAC System Testing, Adjusting and Balancing Works



Kayan 110 Project

Location: New Capital of Egypt
 Client: Ministry of Defense
 Consultant: Sabbour
 Main Contractor: Siac, Samcrete and The Arab Contractors
 Scope of Work: HVAC System Testing, Adjusting and Balancing Works



Hamad New Doha Port

Location: Doha, Qatar
 Owner/Developer: Hamad Port
 Consultant: AECOM
 Main Contractor: Hamad Bin Khalid Contracting (HBK)
 Scope of Work: Commissioning Management



Portonovi Project

Location: Kumbor, Montenegro
 Client: Azmont Investment
 Main Contractor: Impresa Pizzarotti & C. S.p.A
 CSI Scope of Work: Commissioning Management



Rosewood Residences Doha

Location: Lusail, Qatar
 Client: Arkaz Investment
 Consultant: AEB
 Main Contractor: Al Alia Trading & Contracting LLC
 Scope of Work: MEP Systems Commissioning Authority



Seef Lusail Development

Location: Doha, Qatar
 Client: Masraf Al Rayan / Seef Lusail Real Estate Development Company
 Consultant: Parsons
 Main Contractor: UCC-UrbaCon Trading & Contracting WLL
 Scope of Work: MEP Systems Commissioning Management



Zayed National Museum

Location: Abu Dhabi, United Arab Emirates
 Owner/Developer: Department of Culture and Tourism
 Consultant: WSP
 Main Contractor: Arabtec
 MEP Sub Contractor: EFECO
 Scope of Work: Commissioning Management and TAB Work



Zealand University Hospital

Location: Koge, Denmark

Client: KHPT

Main Contractor: JV Itinera(Gavio Group, Leader) & C.M.B.(Partner)

Scope of Work: Commissioning Management



European Investment Bank HQ

Location: Luxembourg

Owner: EIB

Consultant: IDOM

Main Contractor: Rizzani de Ecche, Ballast Nedam International JV

Scope of Work: Testing & Commissioning Authority



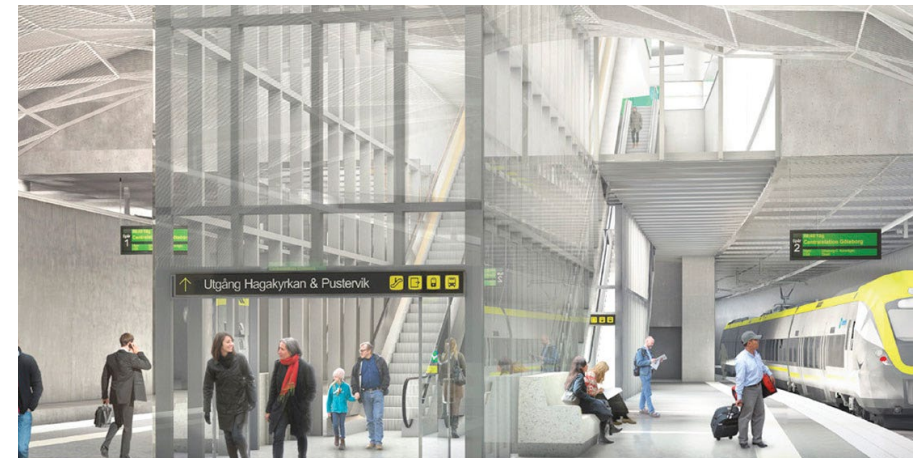
Warsaw Metro Line II

Location: Warsaw, Poland

Owner/Developer: Warsaw Metro

Main Contractor: Astaldi, Gülermak

Scope of Work: Various Engineering Works



Haga Metro Station

Location: Gothenburg, Sweden

Owner/Developer: Trafikverket

Main Contractor: Astaldi, Gülermak, NRC Group JV

Scope of Work: Various Engineering Scope



Hilton Garden Inn – Avenues Hotel

Location: Manama, Kingdom of Bahrain
 Owner/Developer: Bareeq Al Retaj Real Estate Services WLL
 Consultant: SSH Engineering
 Contractor: Delta Construction Co. W.L.L.
 Scope of Work: HVAC System Testing, adjusting and balancing Works



S52 The Southern Bypass

Location: Warsaw, Poland
 Client: General Director for National Roads and Motorways Krakow branch
 Main Contractor: Gulermak
 Scope of Work: Verification of Documentation to Zrid in Accordance with the Contract Requirements for the MEP Installation in Tunnels



Saraya Aqaba Hotel Zone W

Location: Aqaba, Jordan
 Client: Eagle Hills
 Consultant: Turner, Time
 Main Contractor: CCC
 Scope of Work: HVAC System Commissioning, and Testing, Adjusting & Balancing Works



Qatar Academy

Location: Doha, Qatar
 Owner/Developer: Qatar Foundation
 Consultant/PM: Turner (TIME) Qatar
 Main Contractor: HBK Contracting
 Scope of Work: Commissioning Management



New Zealand Embassy Riyadh

Location: Riyadh, Kingdom of Saudi Arabia

Client: New Zealand Embassy

Consultant/PM: WSP

Main Contractor: Absal Paul Contracting

Scope of Work: Refurbishment Project Commissioning, Testing, Adjusting & Balancing , COD



Al Udeid Air Base

Location: Qatar

Scope of Work: Close-Out Documentaion



Falcon 5 Base

Location: Qatar

Scope of Work: Testing & Commissioning Management, Close Out Documentation



Naval Support Activity Bahrain

Location: Bahrain

Scope of Work:

- HVAC System Commissioning, and Testing, Adjusting & Balancing Works
- Design Review Report
- TAB Method statement



UD 2.4 LSA - 3 Packages

Location: Jordan

Scope of Work: Commissioning Management and electrical Hands-on Testing

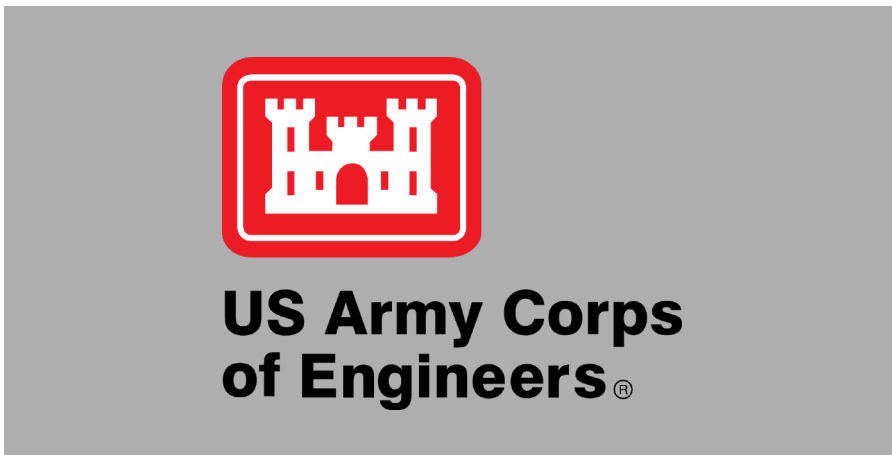
- Package 1 UD 2.4 LSA
- Package 2 UD 2.4 LSA UD 2.4 Flight Line RD
- Package 3 UD 2.4 LSA DORMITORY ATLSA



Falcon Base

Location: Qatar

Scope of Work: Testing & Commissioning Management, Close Out Documentation



RSLFAC Aviation Facility Upgrade-Al Kharj Warehouse

Location: KSA

Scope of Work: Commissioning Management



Large Aircraft Facilities

Location: UAE

Scope of Work: Commissioning Management, Hands-on Electrical Testing & TAB Works



Abu Dhabi Plaza

Location: Astana, Kazakhstan
 Abu Dhabi Government / ALDAR Properties PJSC
 Consultant/PM: AECOM
 Main Contractor: Arabtec Consolidated Contractors Company JV
 CSI Scope of Work: MEP Systems Commissioning Management / Electrical Testing / HVAC Systems TAB Works



Dhahran Substation

Location: Dhahran, Kingdom of Saudi Arabia
 Owner/Developer: Saudi Electricity Company
 Main Contractor: Maetel Saudi Arabia Construction Co. Ltd.
 Scope of Work: Electrical Testing and Commissioning Works - 2 115/13.8KV Substation



Doha International Airport

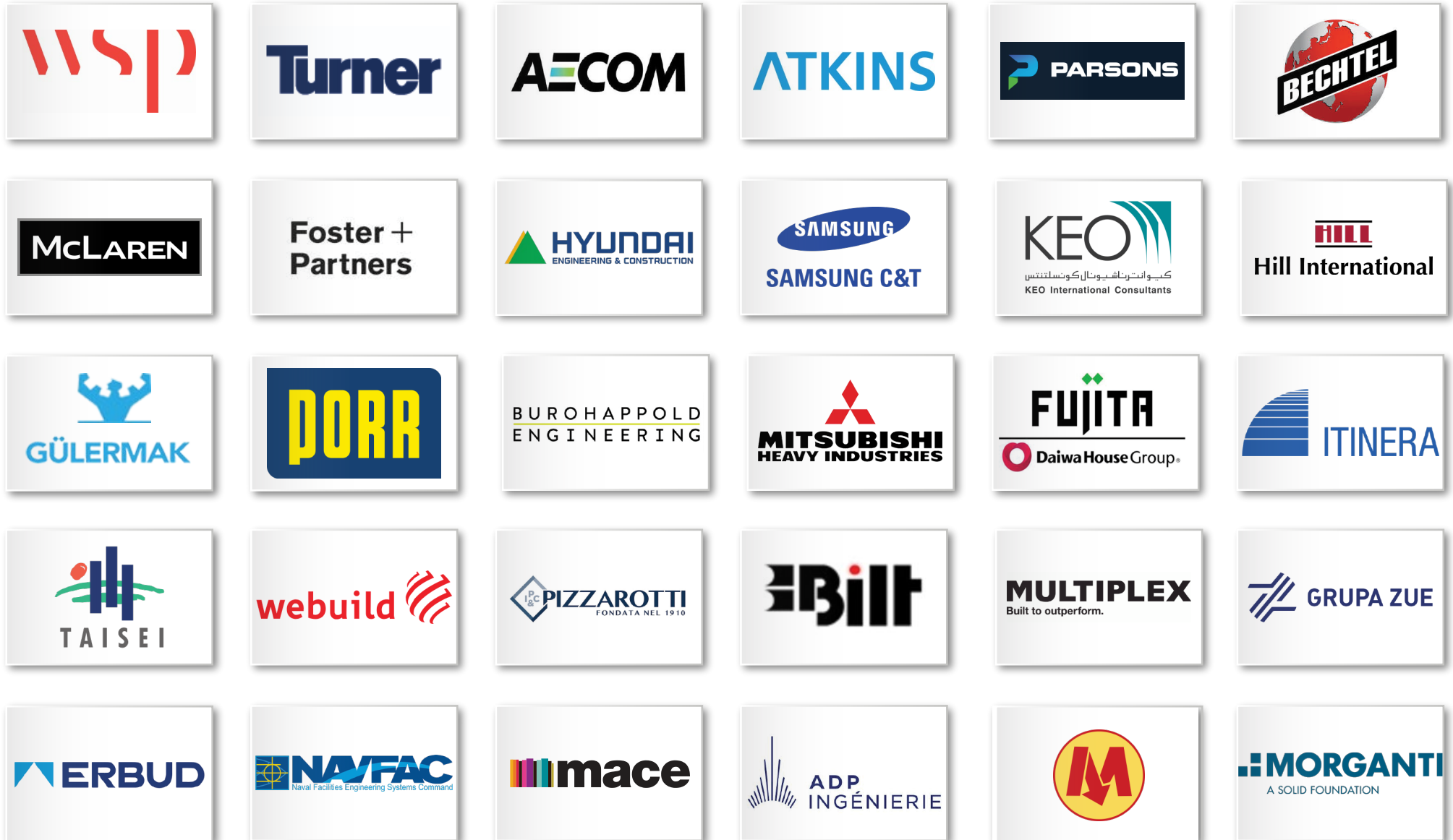
Location: Doha, Qatar
 Owner/Developer: Qatar Civil Aviation Authority
 Consultant: Dar Al Handasah
 Scope of Work: Recommissioning, Survey And As Built Generation



Museum of The Future

Location: Dubai, UAE
 Owner/Developer: Meraas
 Consultant/PM: Burohappold Engineering
 Main Contractor: Bam Higgs & Hill LLC
 MEP Sub-Contractor: Trans Gulf Electro Mechanical
 Scope of Work: HVAC Testing, Adjusting and Balancing Works

Some Of Our Clients



Some Of Our Clients





SERVICES



Advanced Analytics & Intelligence



Artificial Intelligence (AI)



Cybersecurity



Digital Transformation



End-to-End Development

PRODUCTS



Videntium is an integrated platform that streamlines every phase of a building's lifecycle from initial design and construction to handover and long-term operation. By uniting teams, data, and workflows in a single, connected environment, Videntium empowers organizations to manage their projects with greater transparency, control, and accountability. It transforms complex building processes into a clear, collaborative experience, ensuring that every stage adds value and drives sustainable performance over time.



MyHR 724 is a comprehensive, intelligent platform that manages the entire employee lifecycle from recruitment and onboarding to daily operations, performance management, and final offboarding. Designed to support both strategic HR functions and everyday workforce needs, it brings structure, transparency, and efficiency to every stage of employment. By centralizing all HR processes in a single, easy-to-use system, MyHR 724 empowers organizations to stay in full control of their workforce ecosystem, strengthen compliance, and enhance the employee experience, driving sustainable growth and operational excellence.



MyHelpDesk 724 is an intelligent, adaptable platform designed to streamline support and service operations across internal teams and external clients. By consolidating IT requests, asset management, administrative tasks, and customer inquiries into a single system, it enables organizations to maintain order, efficiency, and responsiveness. With configurable workflows, structured approvals, and SLA-based tracking, every request is managed with accountability and delivered on time. MyHelpdesk 724 provides full visibility and measurable performance, supporting organizations in delivering reliable, high-quality service at scale.



LET'S TALK

FUTURE OF TECHNOLOGY

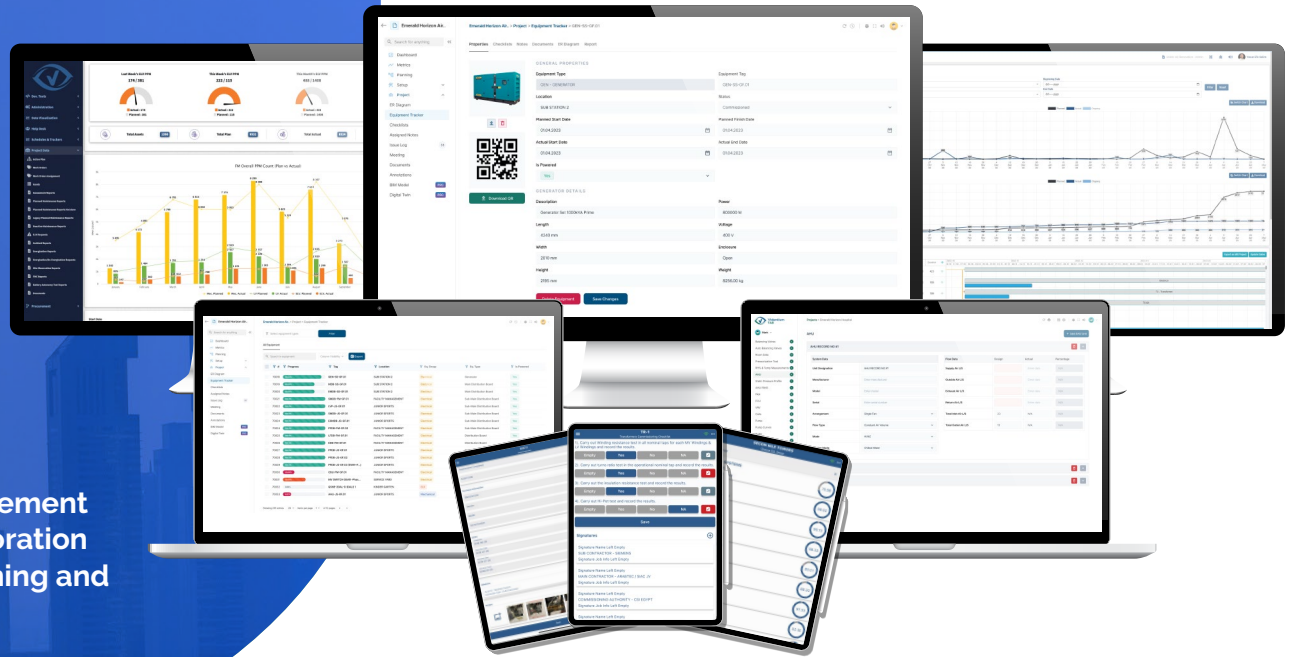
Thronis is a technology company founded by engineers dedicated to simplifying complexity and delivering lasting value. We provide innovative digital platforms and expert services spanning IT consultancy, cloud infrastructure, cybersecurity, AI solutions, and software engineering. Our teams combine deep technical knowledge with a client-focused approach to drive clarity, efficiency, and sustainable progress. At Thronis, success is measured by how confidently we empower organizations to move forward and achieve their strategic goals.



Videntium

We created The Most Powerful Software for Your Construction

Videntium is a web-based construction project management application that facilitates communication and collaboration between teams and stakeholders involved in the planning and execution phases of a construction project.



Building Assessment Tool

Empower personnel to efficiently collect and organize the essential information about any type of asset information and relations in any building.



Construction

Track and report construction progress in real-time



Document & Work Flow

Project document management software designed to efficiently manage documents, collaboration, and workflows across diverse stakeholders, enhancing project transparency and productivity.



Cause & Effect

Simplifies the planning and execution of cause-and-effect procedures that are vital for every construction project.



Facility, Resource and Asset Management Environment

Designed to provide an efficient platform for asset, maintenance, manpower, helpdesk, and procurement functions.



Help Desk

Designed to provide real-time tracking and reporting of Reactive Maintenance Activities.



Testing & Commissioning

Designed to be flexible and modular, with the ability to manage test and commissioning stages seamlessly, ensuring effective testing and commissioning processes.



Testing, Adjusting, & Balancing

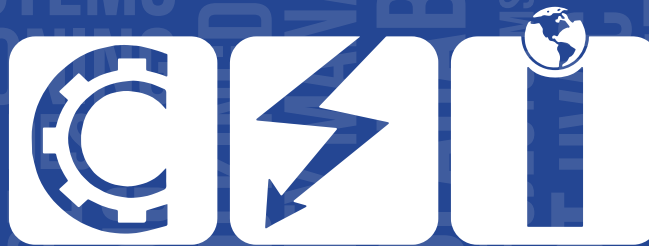
Designed to elevate every aspect of the TAB process while adhering to NEBB standards



We are extending
our professionalism



across the globe through
prestigious projects.



Global



+971 48 88 6446

+1 945 216 4448

+48 781 570 470

+966 11 235 7522



info@csicx.com

usa.info@csicx.com

europa.info@csicx.com

ksa.info@csicx.com



Motor City, Control Tower
Office: 3503 Dubai/ UAE

15810 Park Ten Pl,
Suite 355, Houston
TX 77084/ USA

Ul. Włodkowica 2C
03-262 Warszawa, Poland

Al Yasmeen District, FAB 3
Commercial Complex 6871
Office A1 & A2 Al Riyadh
13322-2516/ KSA



csicx.com



/csiglobal